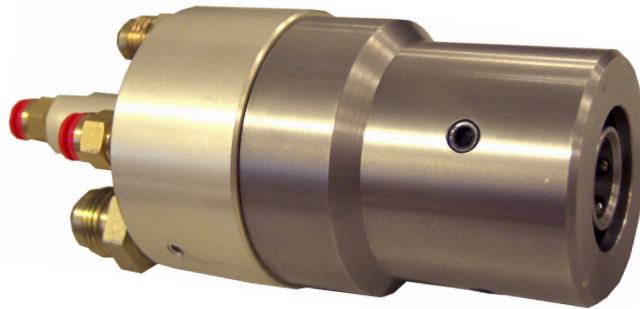




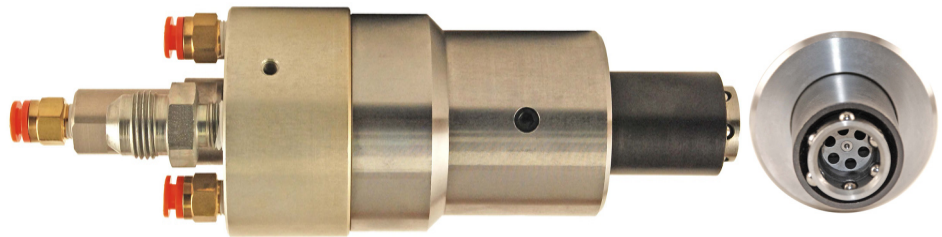
## Series 15000-003 Evacuation & Refrigerant Charging Tool

### FEATURES

- Minimum refrigerant loss
- Automatic disconnect capability
- Zero connection force with clamp tell-tale
- Automatic operation, upon connection to fitting
- High vacuum and refrigerant flow rates
- Air operated
- Lightweight
- Connection to J639 Low-Side fitting



**Standard Series # 15000-003  
Low-Side J639**



**Extended Nose Model**

Reduce labor content and minimize emission of refrigerant to the atmosphere!

The Model 15000-003 Charging Tool is the interface adapter for a refrigerant charging system. It is designed for direct connection to quick-connect low-side HFC-134a/A/C process fittings for evacuation and refrigerant charging, with de minimis refrigerant loss to atmosphere from the tool, and the additional benefit of automatic disconnect at cycle completion.

Tool operation is controlled automatically in that the operator only has to locate the tool on the process fitting. The tool then clamps (indicated by the tell-tale), seals, and initiates the charging machine cycle including evacuation, vacuum check and refrigerant charging. After cycle

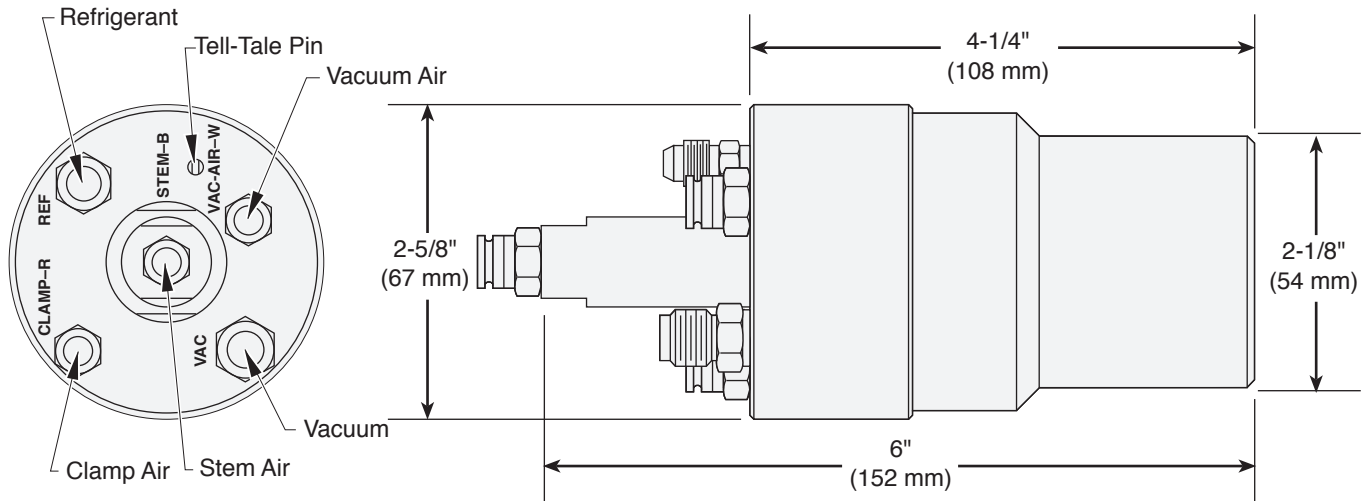
completion, the process fitting seal is reseated and the tool disconnects.

The clamping mechanism used is the time proven ball lock method. The six hardened steel balls which are constrained in the charge gate body are secured onto the ball groove taper on the process fitting by the locking sleeve. Securing the balls on the taper assures positive force on the nose seal.

The Model 15000-003 is used with hydraulic driven ram charging systems. Application to other equipment, including competitive charging systems, can also be accomplished.

Save money with the PCU Model 15000-003 Charging Tool. Contact our Order Department at (1-937-299-5594) with your application and equipment specifications.

# Series 15000-003 Evacuation & Refrigerant Charging Tool



## TECHNICAL SPECIFICATIONS:

Weight . . . . .	3.1 lbs (1.4 kg)	Air pilots . . . . .	(Vacuum, Clamp & Stem air)
Vacuum range . . . . .	0-760 TORR (0-760 mmHg)	Air supply pressure . . . . .	80 PSIG (5.6 kg/cm <sup>2</sup> )
Vacuum flow . . . . .	2.5 SCFM	Air port fittings . . . . .	1/4" dia. one touch connectors, color coded
Vacuum port fitting . . . . .	1/2" JIC flare	Process fitting compatibility . . . . .	SAE J639
Refrigerant . . . . .	HFC-134a at 600 PSIG max. (42 kg/cm <sup>2</sup> ) relieves at 350 PSIG (25 kg/cm <sup>2</sup> )	Process fitting nose seal . . . . .	Molded
Refrigerant port fitting . . . . .	3/8" JIC flare	Process fitting clamp system . . . . .	PCU BalLoc
Tool flow rate . . . . .	255g/sec (Typical value based on external drive force of 750 PSI)	Oil compatibility . . . . .	Polyolester or PAG
		<b>PATENTS:</b>	
		This tool is manufactured under U. S. Patent No. 4,805,417	

## STANDARD PART NUMBER 49946:

- 1.5" Nose Extension: Part No. ...102997-001
- 3.0" Nose Extension: Part No. ...102997-002

\* Please refer to PB023 for series 13000 high-side tool.



## Production Control Units, Inc.

2280 West Dorothy Lane, Dayton, Ohio 45439-1892 Phone (937) 299-5594 FAX: (937) 299-4843  
©Production Control Units, Inc. U.S.A. Web: www.pcuinc.com