



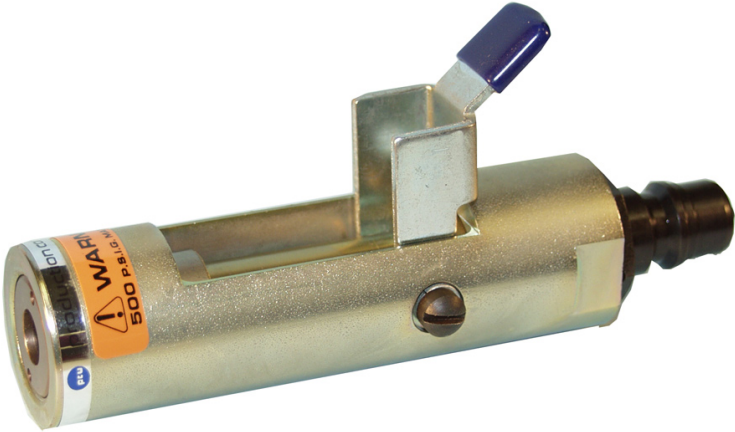
Series 93 Tube Quick-Connect Coupler

FEATURES

- Leak Free, Positive Locking
- Quick Connect/ Disconnect
- Valved Shutoff
- Adaptability
- 1" Straight Tube Length Engagement

APPLICATIONS

- Refrigerants
- Vacuum/Air
- Oil
- Water
- Mass Spectrometer Applications
- Helium
- Nitrogen



The Production Control Units Series 93 T.Q.C. is designed for easy installation onto the end of either straight or belled type tubing. With an engagement length of one (1"), the actual gripping to sealing length is three fourths (3/4") of an inch. Slide the coupler onto the tubing until seated and then push down the camming lever allowing the shuttle to drive forward causing the collet to grip and tubular seal to seal the process tube for the evacuation, charging or pressure testing.

The Series 93 T.Q.C. holds pressures from 25 microns vacuum up to 1000 PSIG with a minimum proof pressure of 4000 PSIG.

These tough compact PCU couplers utilize heat-treated parts for long life and interchangeability. With finishes that resist corrosion. They provide a large, unrestricted flow rate for a variety of production uses while minimizing process material loss during coupling/uncoupling in

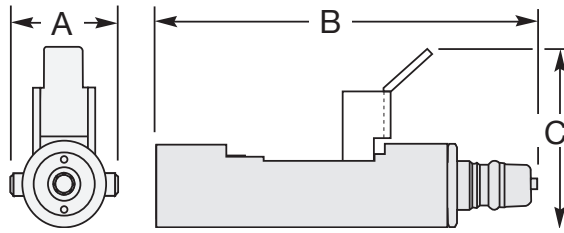
a temperature range of 0° to 250° F. Safety from accidental blow-off is maintained by the location of the camming lever. The lever is down inside the coupler body and can only be operated by manually overcoming body spring and charge pressure.

The PCU Series 250, 410 or the ISO "B" Nipple is completely serviceable by unscrewing the Nipple from the back side of the coupler. Any other end cap can be used in the same manner.

The tube seal is contained in the collet closer. To replace this seal simply remove the collet, collet closer, and seal. Replace the seal and install components in reverse order.

All Series 93 T.Q.C's are built with Neoprene as the standard elastomer. However, we offer Buna-N, Fluorocarbon, EPDM and many other seal materials to suit your application.

Series 93 Tube Quick-Connect Coupler



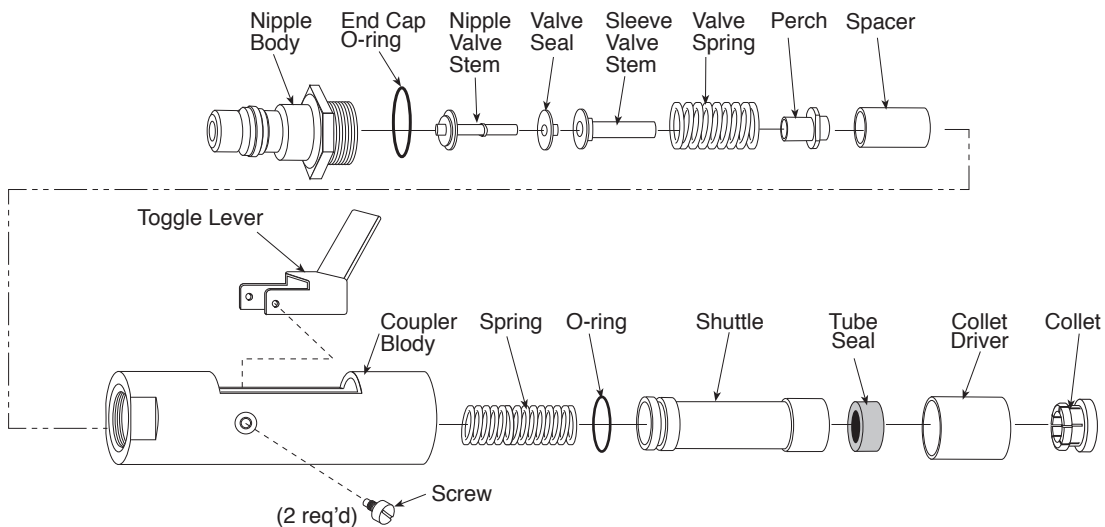
Size	A	B	C
1/4", 5/16", 3/8", 7/16", 1/2"	1.25"	5.86"	2.00"
5/8", 3/4"	1.50"	5.86"	2.03"
7/8", 1"	1.88"	6.35"	2/26"

Part Number 93

Series

<u>Styles</u>	<u>Tube Size (O.D.)</u>	<u>O-Ring Compounds</u>	<u>End Cap Size & Style</u>
1 = Flow Thru	04 = 1/4"	1 = Neoprene	01 = No Flow
4 = No Flow	05 = 5/16"	2 = Buna-n (Nitrile)	03 = Series 410 Nipple (No Shut-off Valve)
	06 = 3/8"	3 = Fluorocarbon (Viton)	25 = Series 252 Nipple
	07 = 1/2"	6 = EPDM	41 = Series 253 Nipple
	08 = 5/8"	7 = For use with HFC-134a Refrigerant	61 = Series 250 Model 61 Nipple
	09 = 3/4"		66 = Series 410 Nipple
	10 = 1"		71 = Series 250 Model 71 Nipple
	19 = 7/8"		
	20 = 7/16"		

* PCU will customize to fit your tube size and end cap requirements. Please contact PCU Engineering.



Production Control Units, Inc.

2280 West Dorothy Lane, Dayton, Ohio 45439-1892 Phone (937) 299-5594 FAX: (937) 299-4843
©Production Control Units, Inc. U.S.A. Web: www.sterlingpcu.com