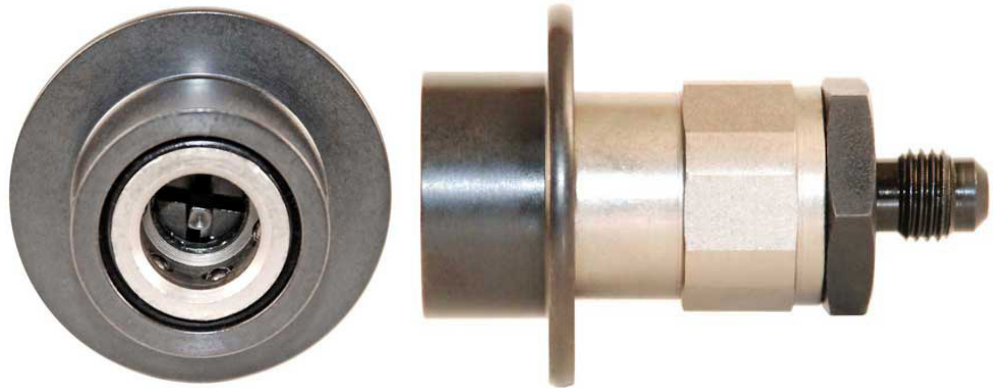




Series HFC-134a BalLoc Model 86 Couplers

FEATURES

- Quick Connect/
Disconnect
- Minimum
Refrigerant Loss
- Vacuum
- HFC-134a
- SAE J639
Compatible



The Production Control Units Series HFC 134a BalLoc Coupler, Model 86, is designed for easy installation onto the SAE J639 low side process fitting. Use the Model 86 Coupler for evacuation or refrigerant charging with de minimus refrigerant loss to atmosphere from the Coupler.

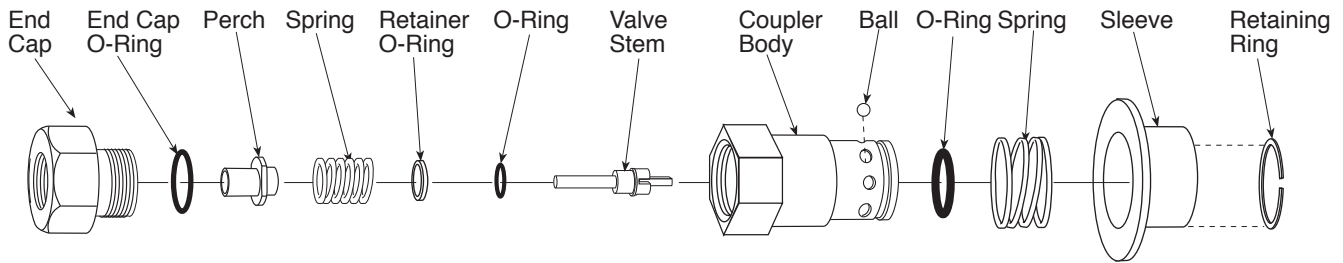
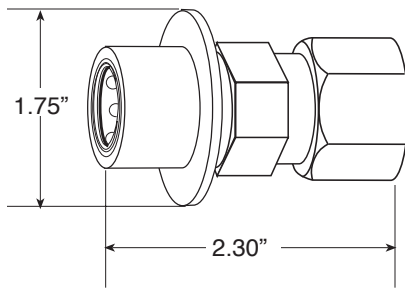
These tough, lightweight PCU Couplers utilize heat-treated parts for long life. A six-ball detent lock provides instant positive coupling. Simply pull back on the locking ring on the Coupler, slide the Coupler over the low side fitting and release the locking ring to achieve a positive, leak free, seal.

The PCU Model 86 Coupler compliments our Pneumate Series 101 Model 86 powered Coupler which is used when automatic disconnect is required.

Coupler can be converted to a vented coupler just by changing the stem. Contact our order department for stem or coupler part number.

Contact our Order Department at (937-299-5594) to find out how our PCU Process Couplers can save you time and money.

Series HFC-134a BalLoc Model 86 Couplers



Part Number		
<p>Model No. 86 = Series</p>	<p>End Cap Size & Style 2 1 = 1/4 NPT, female 2 2 = 1/4 SAE, flare, male 2 3 = 1/4 NPT, male 3 1 = 3/8 NPT, female 3 2 = 3/8 SAE flare, male 3 3 = 3/8 NPT, male</p>	<p>O-Ring Compounds 1 = For HFC 134a Refrigerant 2 = Buna-n (Nitrile) 3 = Fluorocarbon 6 = EPDM 9 = Neoprene</p>

SERVICE BULLETIN

Service Bulletin [SB134aBL-86LS](#) contains general description, spare parts list, and maintenance information.

Standard Stock Couplers: 86221

See Product Bulletin PB046 for PCU Standard Test Bottle Fittings.



Production Control Units, Inc.

2280 West Dorothy Lane, Dayton, Ohio 45439-1892 Phone (937) 299-5594 FAX: (937) 299-4843
 ©Production Control Units, Inc. U.S.A. Web: www.sterlingpcu.com