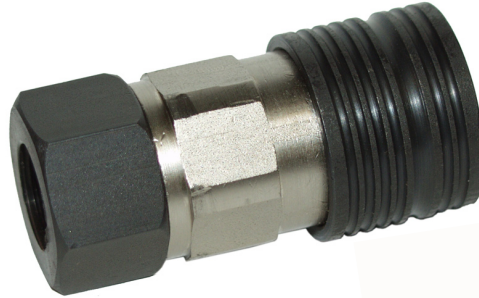




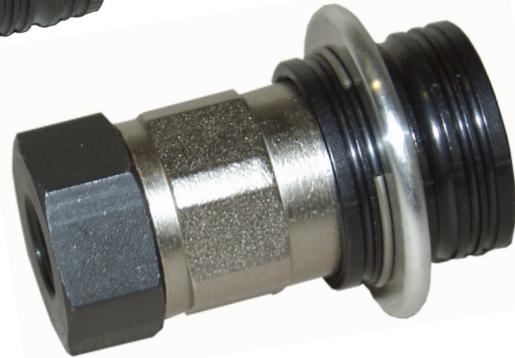
Series HFC-134a BalLoc Model 87 Couplers

FEATURES

- Quick Connect/ Disconnect
- Minimum Refrigerant Loss
- HFC-134a
- SAE J639



With or without flange.



The Production Control Units Series HFC 134a BalLoc Coupler, Model 87, is designed for easy installation into the SAE J639 high side process fitting. Use the Model 87 Coupler for evacuation or refrigerant charging with de minimis refrigerant loss to atmosphere from the Coupler.

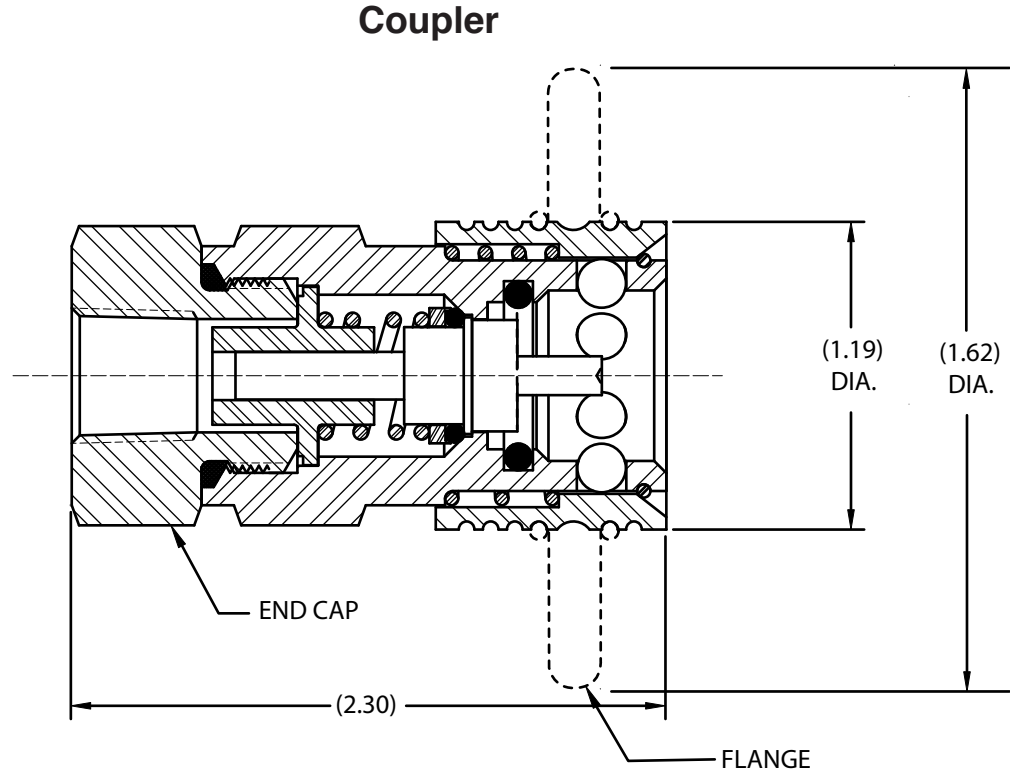
These tough, lightweight PCU Couplers utilize heat-treated parts for long life. A six-ball detent lock provides instant positive coupling. Simply pull back on the locking ring on the Coupler, slide the Coupler

over the low side fitting and release the locking ring to achieve a positive, leak free, seal.

The PCU Model 87 Coupler compliments our Pneumatic Series 101 Model 87 Powered Coupler which is used when automatic disconnect is required.

Contact our Order Department at (1-937-299-5594) to find out how our PCU Process Couplers can save you time and money.

Series HFC-134a BalLoc Model 87 Coupler



Part Number			
<u>Model No.</u>	<u>End Cap Size & Style</u>	<u>O-Ring Compounds</u>	<u>Flange</u>
87 = Series	2 1 = 1/4 NPT, female 2 2 = 1/4 SAE, flare, male 2 3 = 1/4 NPT, male 3 1 = 3/8 NPT, female 3 2 = 3/8 SAE flare, male 3 3 = 3/8 NPT, male	1 = For HFC 134a Refrigerant 2 = Buna-n (Nitrile) 3 = Fluorocarbon 6 = EPDM 9 = Neoprene	Blank = No Flange FL = with Flange

SERVICE BULLETIN

Service Bulletin [SB134aBL-87HS](#) contains general description, spare parts list, and maintenance information.

Standard Stock Couplers: 87211 or 87221

See Product Bulletin PB046 for PCU Standard Test Bottle Fittings.



Production Control Units, Inc.

2280 West Dorothy Lane, Dayton, Ohio 45439-1892 Phone (937) 299-5594 FAX: (937) 299-4843
©Production Control Units, Inc. U.S.A. Web: www.pcuinc.com